

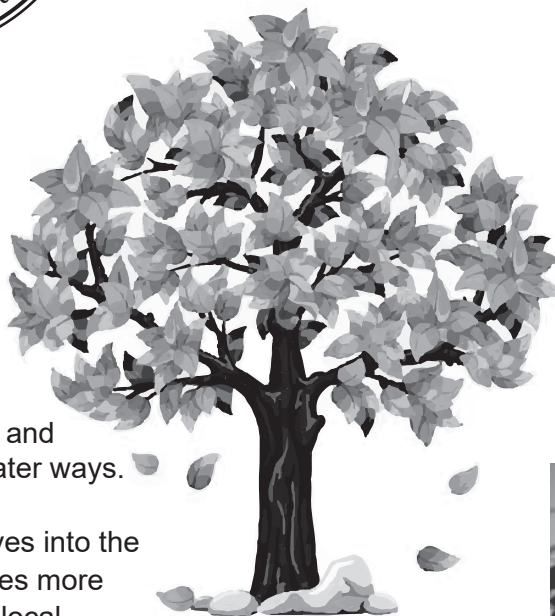


## TIPS FOR FALL

It is important to control stormwater pollution year-round and stay vigilant in protecting our local waterways. Here are some ways you can help at home with stormwater management tips for Fall.

### LEAVES

The leaves will start to fall soon, and their improper disposal can pose a threat to us and our local water ways.



Raking leaves into the street creates more pollution of local streams and waterways by adding too much nitrogen and phosphorus into our water ways. But, not only do leaves contribute to stream pollution, they can cause localized flooding if they clog storm drains and pipes. Please, help protect nearby waterways from excess nutrients and never rake leaves into the street.

St. Albans also has a leaf collection program. Contact our Public Works Department to learn what days leaf pick up is for your ward.

### LANDSCAPING

No matter what time of year it is, if you are working on a landscaping project in your yard bare soil can run off during a storm causing sediment pollution and can even clogging storm drains! Think about piles of dirt if you are going to start any projects, it's a great idea to cover them for rain.

### *Did you know?*

Leaves can be a great source of nutrients for your property, consider mulching them into fertilizer for your yard or garden. **However**, a decaying mat of leaves on your lawn can expose it to mold and disease. If your lawn is covered with more than 50 percent of decaying leaves, consider bagging or composting leaves, rather than mulching but remember to never blow them into the street or ontop of a storm drain!

### GUTTERS

Fall is a great time to clean out your gutters. Leaves can build up in your gutters and decay causing them to be ineffective. This can cause water to fall improperly along your homes foundation which can be very damaging to your home over time. Plus, decaying leaves can add excess harmful nutrients to stormwater which can ultimately affect our water ways.



*Photo of clogged gutters.*

### FERTILIZER & SEEDS

Fall is the best time for seeding and fertilizing your lawn. However, if excess fertilizer is applied it cannot be absorbed by the soil and will wash away with the rain.

Do not use fertilizers immediately before a rainstorm, and do not apply them in excess. Always follow the directions on the bottle for safe application and disposal whenever you use a chemical product.





Elizabeth Elswick

www.facebook.com/RainwaterWorx



1499 MacCorkle Ave. Saint Albans 25177

Phone: 304-722-3391 x106 Fax: 304-722-6555

Email: MS4Admin@stalbandsWV.com

# WHAT'S HAPPENING IN SA?



## St. Albans Historical Society

Monthly Open House  
404 4th AVE  
SAT Sept 5th  
10am - 2pm

## St. Albans Food Truck & Music Festival

Road Side Park  
SAT Sept 26th  
5pm - 8:30pm

## St. Albans Farmers Market

The Loop parking lot across  
from fire department  
SAT Sept 12th & 26th  
9am to 12pm

Per Governor Jim Justice, masks are to be worn inside all public buildings, for ages 9 and over, when social distancing cannot be maintained. Please, be prepared to wear a mask in all City of SA buildings.

Check with St. Albans WV Parks and Recreation Department and Alban Arts Center on Facebook for more events & updates!

## BILL PAYMENTS

### NOW PAY CITY SERVICE FEES ONLINE OR VIA PHONE!



Go to **WWW.STALBANSWV.COM** or call **1-833-208-7484** to make a payment!

You will need your account number on hand.

### NOW PAY WATER/SEWER ONLINE OR VIA PHONE!

Go to **WWW.STALBANSMUC.COM** or call **1-833-208-7483** to make a payment!

You will need your account number on hand.



## REMEMBER!

### PLEASE DO NOT LEAVE YARD WASTE OR TRASH IN THE STREET OR ON A SIDEWALK!

If yard waste (grass clippings, leaves, brush, etc) or trash is left along streets, driveways, and/or sidewalks, then when it rains all of that waste can be easily washed to storm drains. This can cause storm drains to become blocked and risk flooding. Please, let us know if you see a clogged drain.

#### 953.11 THROWING OR SCATTERING GARBAGE; PERMITTING PREMISES TO BECOME UNSANITARY.

No person shall throw, place or scatter any garbage, rubbish, trash, grass clippings, leaves or yard debris or other refuse over or upon any premises, street or alley, sewer or drainage basin, either public or private, or adjacent thereto..

