



LITTER & STORMWATER

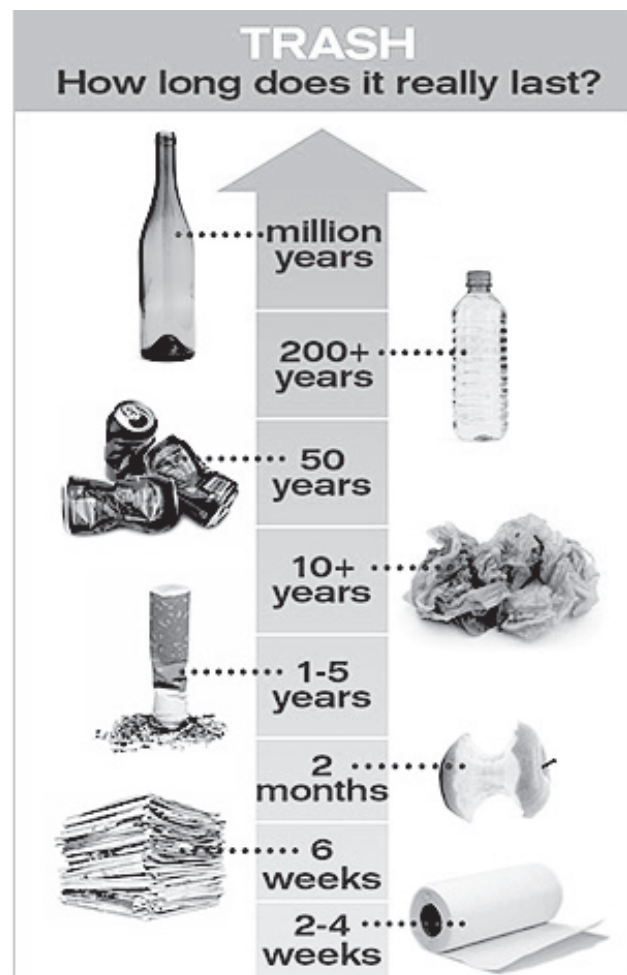
Litter is waste products that have been disposed of improperly in an inappropriate area. It affects the quality of life for our community in many ways including like: (1) Clogging our stormwater system which in turn causes flooding. (2) Entering our stormwater system which can end up polluting our drinking water system and can causes more expense in the treatment of our drinking water. (3) Degrading the ecosystem by harming animals that get trapped ingest waste products. (4) Plus, it just doesn't look good for our community and neighbors.

WHAT CAN I DO?

There are many things you can do as an individual, family, and community to help with litter.

1. Cigarette butts are the most common form of litter. Carrying a personal ashtray is a great way to prevent litter.
2. Do not drop any waste into our streets, including liquid chemicals. Any litter that gets into our drains will affect our stormwater.
3. Do not sweep grass clippings and garden wastes into gutters and/or streets. This includes being aware of how you administer your fertilizer, ensuring it does not find its way into our stormwater system. Clippings and sticks that are placed in the yard waste container are recycled.
4. Never pour household chemicals into storm drains. Contact the WV DEP at 304-558-5938 for any hazardous waste questions.
5. When washing your car, do it on your lawn to minimize impacts from soap, mud, oil, and grease in our water system. Going to a car wash is also a great option as they have special run off systems.
6. Picking up after a dog. Take a plastic bag or another suitable container to collect those little presents your dog leaves behind when you go for a walk. Pet waste and stormwater info.

Trash, regardless if it is littered or disposed of properly has a very long life. Check out the chart below and think about ways you can reduce your own waste by using reusable products.



Did you know?

The image of Santa Claus flying his sleigh began in 1819 and was created by Washington Irving, the same author who dreamt up the Headless Horseman.



Elizabeth Elswick

www.facebook.com/RainwaterWorx

1499 MacCorkle Ave. Saint Albans 25177

Phone: 304-722-3391 x106 Fax: 304-722-6555

Email: MS4Admin@stalban WV.com

WHAT'S HAPPENING IN SA?



St. Albans Historical Society

Monthly Open House

404 4th AVE

SAT Dec 5th

10am - 2pm

Luminaries at Cunningham

Cunningham Memorial Park

SAT Dec 5th

Festival of Lights

St. Albans City Park

At dark through Dec 23rd

St. Albans Historical Society 2021 Calendars Available!

The St. Albans Historical Society has 2021 Calendars for sale with vintage town scenes available for \$10 at the Village Sampler, Coal River Coffee, Lil' Bit of Heaven Cupcakes, and Flowers on Olde Main (all on St. Albans Main ST). Some of the pictures depict old homes, early parades, Civic Events and the early Fire Department.

HAPPY HOLIDAYS!

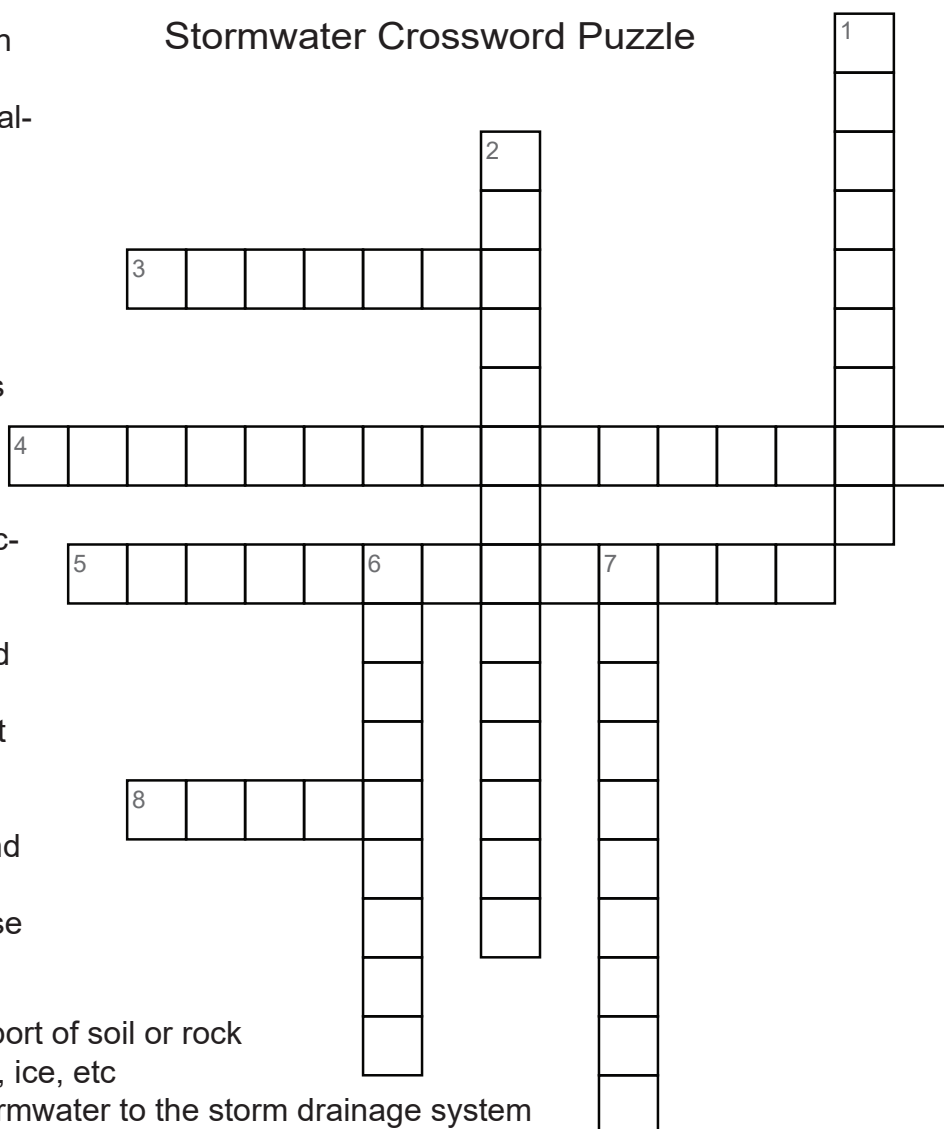
Down:

1. science concerned with the properties of the earth's water, and especially its movement in relation to land
2. type of pollution that occurs when stormwater runoff moves over land or through the ground, picks up pollutants, and deposits them into rivers, lakes, and coastal waters or introduces them into ground water
6. an area or ridge of land that separates waters flowing to different rivers, basins, or seas
7. system that collects and stores rainwater from the roof for future use

Across:

3. detachment and transport of soil or rock fragments by water, wind, ice, etc
4. discharges of non--stormwater to the storm drainage system
5. federal environmental law that includes the management of stormwater
8. most important substance for life

Stormwater Crossword Puzzle



Answers: 1. hydrology, 2. non point source, 3. erosion, 4. illicit discharge, 5. clean water act, 6. watershed, 7. rain barrel, 8. water