



FALLING LEAVES

The leaves are falling and their improper disposal can pose a threat our community and local water ways. Here are some great and fun ways to deal with all those fall leaves!



Fall leaves are like a big load of organic fertilizer strewn about your yard. If those nutrients were bagged and sold, you'd pay money for them. In your yard, they're free -- except for the labor of gathering them.

Fall leaves are full of nutrients that many plants can use, and this includes your lawn. Use your mower to turn your leaves into tiny pieces that settle in your lawn. These will decompose and provide an all-natural lawn food.

You can start to prepare your garden beds for the next year by adding leaves to them to build soil over the winter in those beds.

You can use leaves to insulate your plants for winter. If you have a tender plant that needs a blanket for the winter months, build a cage around the plant, add leaves, and let them help your plants through the winter. This is a particularly good technique in climates that are cold but not wet, so damp leaves will not lead to rot on your plants.

Use fall leaves, unshelled nuts, branches with berries, and other fall garden treasures to make creative dining table centerpieces. Make place cards by writing dinner guests' names on the pretty leaves using a paint pen or permanent marker.

Collect pretty leaves and iron them between sheets of waxed paper. Mount on mat board and frame them for free holiday decor.

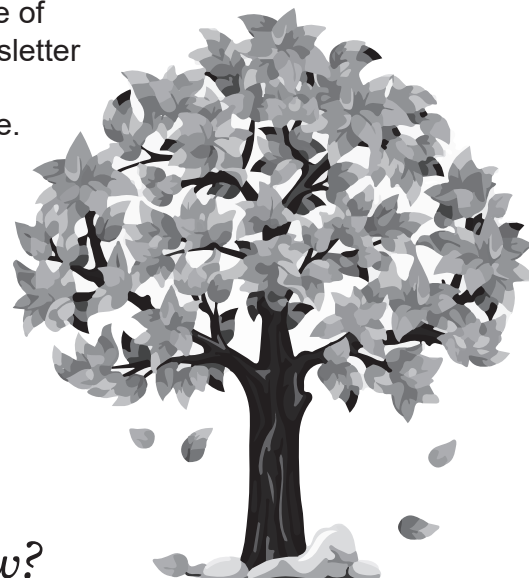
Make a scarecrow by stuffing leaves into old clothes or even burlap bags. Set the scarecrow in a lawn chair by your front door to amuse the mailman.

Make a big pile of leaves in your front yard and I mean a BIG pile. Then jump in it, with or without your kids. When your neighbors stop to stare, invite them to jump in, too.

Need confetti? Gather up some leaves, get a fun paper punch (or a few) from the local craft store and start punching out shapes. Using leaf confetti is a lot better for the environment than plastic confetti that can take years and years to break down.

Raking leaves into the street will only create more issues like (1) leaves can cause localized flooding if they clog storm drains and pipes (2) leaves can cause pollution of local streams and waterways by adding too much nitrogen and phosphorus into our water ways. Please, help protect our community and nearby waterways from excess nutrients by properly maintaining your property's fall foliage.

St. Albans has a leaf collection program going on right now! Remember to pile the leaves at the edge of your yard and not in the street. Program runs until the first snow fall. See the backside of the newsletter for the schedule.



Did you know?

A leaf's color is typically a result of the species of tree it can be found on -- for example, the leaves on aspen trees are generally a golden yellow during the fall months.



Elizabeth Elswick

www.facebook.com/RainwaterWorx



1499 MacCorkle Ave. Saint Albans 25177
Tel: 304-722-3391 Fax: 304-722-6555
Email: MS4Admin@stalbensWV.com

WHAT'S HAPPENING IN SA?

St. Albans Historical Society
Monthly Open House
404 4th AVE
SAT Nov 6th
10am - 2pm

***City offices will be closed:**
Nov 11th - Veteran's Day
Nov 25th-26th - Thanksgiving

On Purpose WV
Learn and help us in
maintain the city flower beds
2nd Tuesday of the month
5:00 pm - 7:00 pm
For more information:
304-400-5609
ONPURPOSEWV@gmail.com
Facebook @onpurposesa

Small Business Saturday
Shop your local small businesses!
SAT Nov 28th

Festival of Lights
at SA City Park
Check their Facebook for
more information on dates
and times.

RECYCLING IN SA

If you are a St. Albans resident and need a recycle tote
please contact the St. Albans Public Works Garage
located at 4th AVE and 8th ST 304-722-4259
HOURS: Monday - Friday 6AM - 4PM

All recyclables should be deposited to the street curb on
the same day as trash collection, which begins at
8:00AM-4:00PM.

We can also pick up appliances once you get them out of the house. Call 304 722-4259 ext 4

We can take:

- Cardboard
(non greasy, Broken down boxes)
- Bi-Metal cans
(Food, coffee, soda)
- Aluminum
- Newspaper
- Appliances



CHECK YOUR TREES

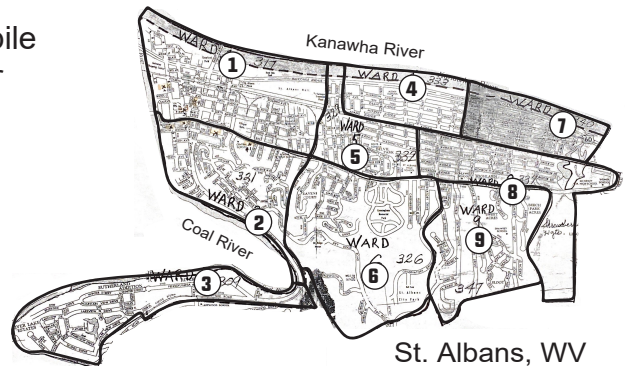
Fall is a great time to prune trees. Please, make sure your property's trees are not interrupting public walk ways like sidewalks and streets. Ordinance 915.07 states 'The minimum clearance of any overhanging portion thereof shall be eight feet over sidewalks and fourteen feet over all streets. This section shall not be construed to require private property owners to prune, remove or otherwise maintain trees located on City-owned property or easements.'

SA LEAF PICKUP

Monday – Wards 1 & 2
Tuesday – Wards 3 & 4
Wednesday – Wards 5 & 6
Thursday – Wards 7 & 8
Friday – Ward 9

Place leaves in a pile
at the edge of your
property but not in
the road.

Contact Public Works with any questions at
304-722-4259



St. Albans, WV

FIRST CHOICE SERVICES

"Do you need Health Insurance? The annual Open Enrollment period for the WV Health Insurance Marketplace is here. It will run from Nov 1 to Jan 15. If you or a family member are currently uninsured, between jobs, or losing your insurance this is a great opportunity for WV residents to get coverage. The vast majority of people that get their insurance on the Marketplace can qualify for free or reduced cost plans. WV has a free, grant funded program (WV Navigator) that can help you navigate your options. You can call them with questions or for help signing up. The WV Navigator program is open Monday – Friday from 8am to 6pm. You can reach them at (304) 356-5834 or at www.acanavigator.com."